

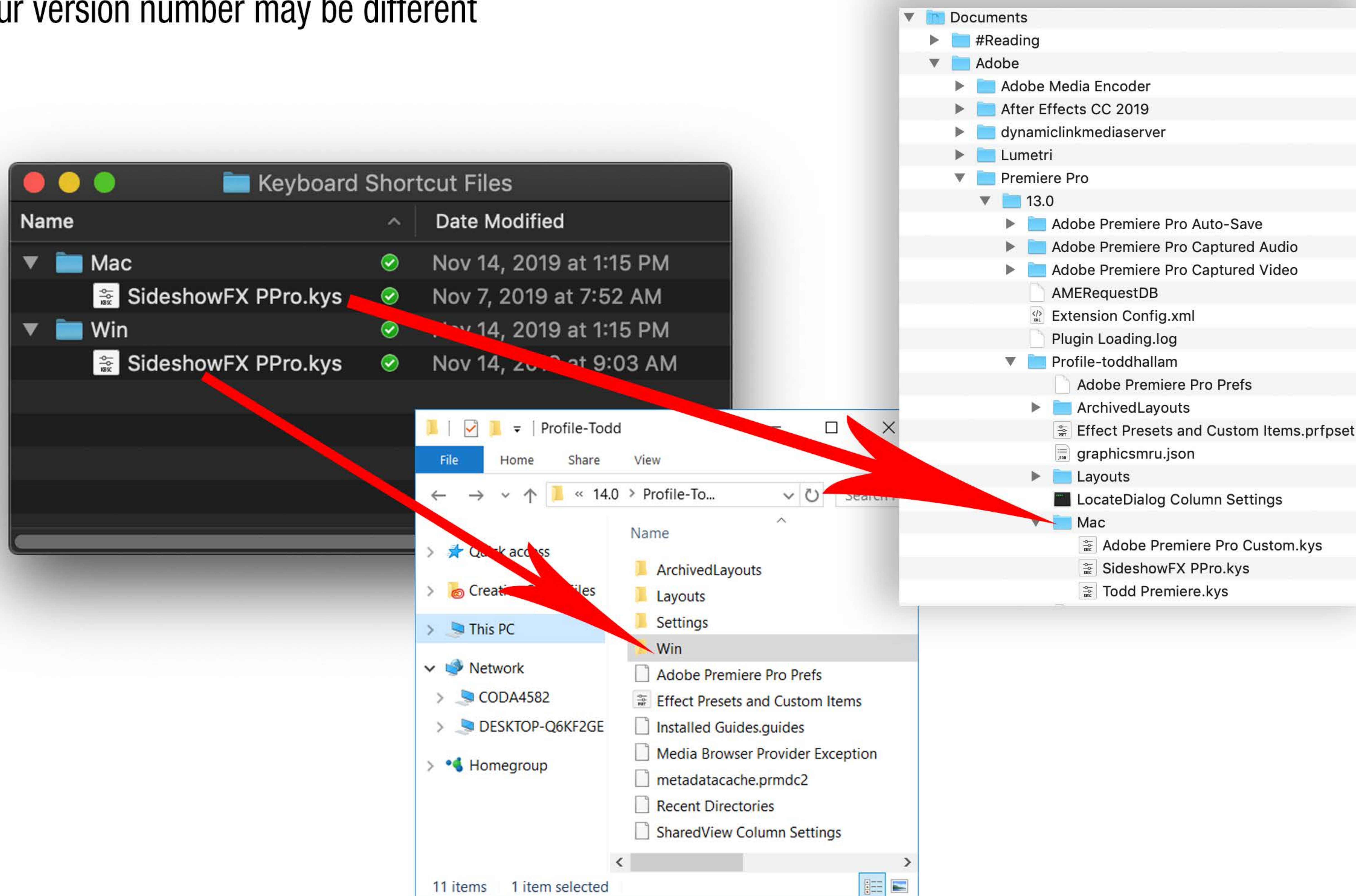
Installing the Touch Portal Starter Page

First, in order for the key commands in this starter profile to work, you will need to install the supplied custom keyboard layout. Drag the file SideshowFX PPro.kys to your application profile folder.

Mac: "**username**"/documents/adobe/Premiere Pro/13.0*/profile-"**username**"/Mac

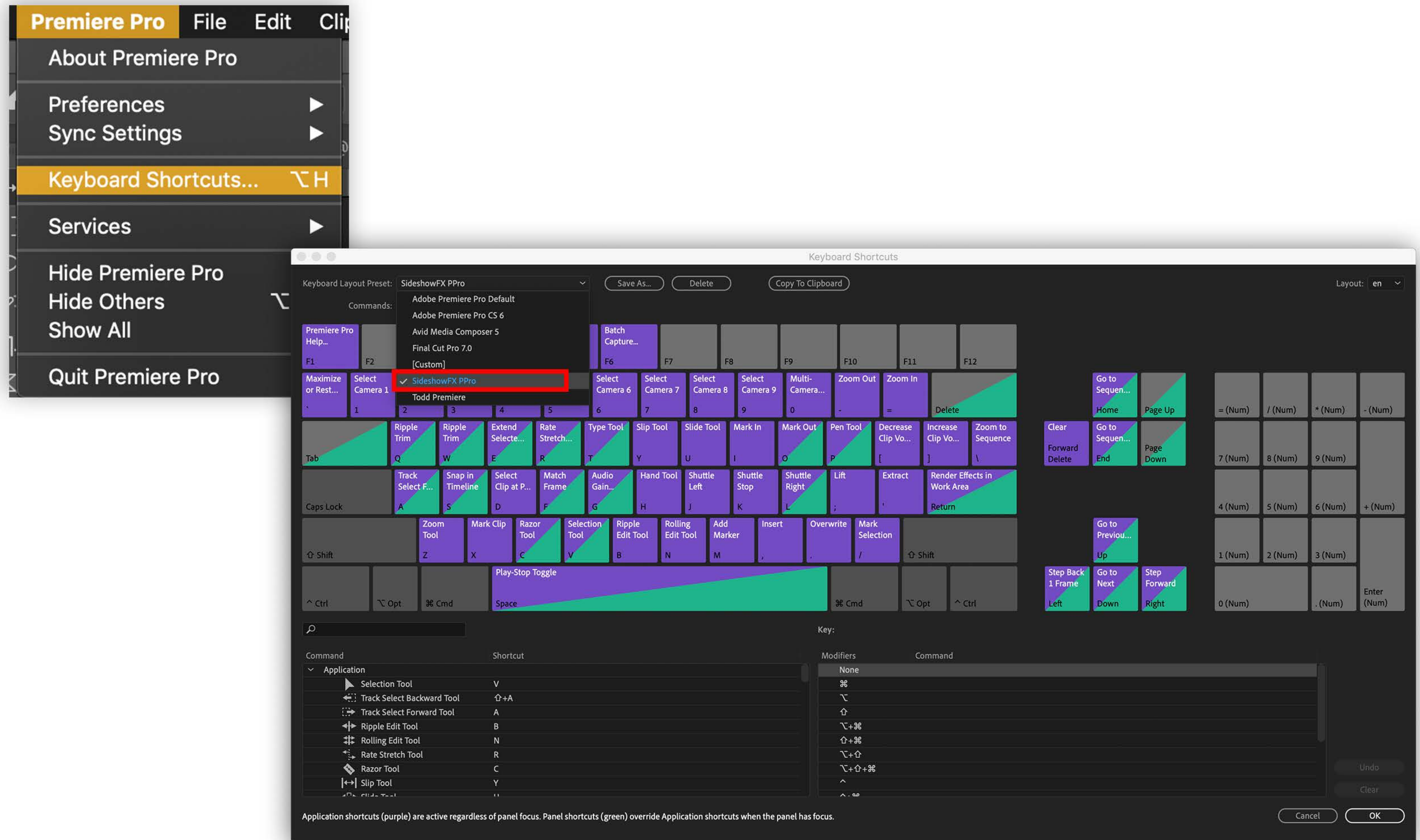
Win: Documents/Adobe Premiere Pro_/13.0*/Profile-"**username**"/Win

*your version number may be different



Installing the Touch Portal Starter Page

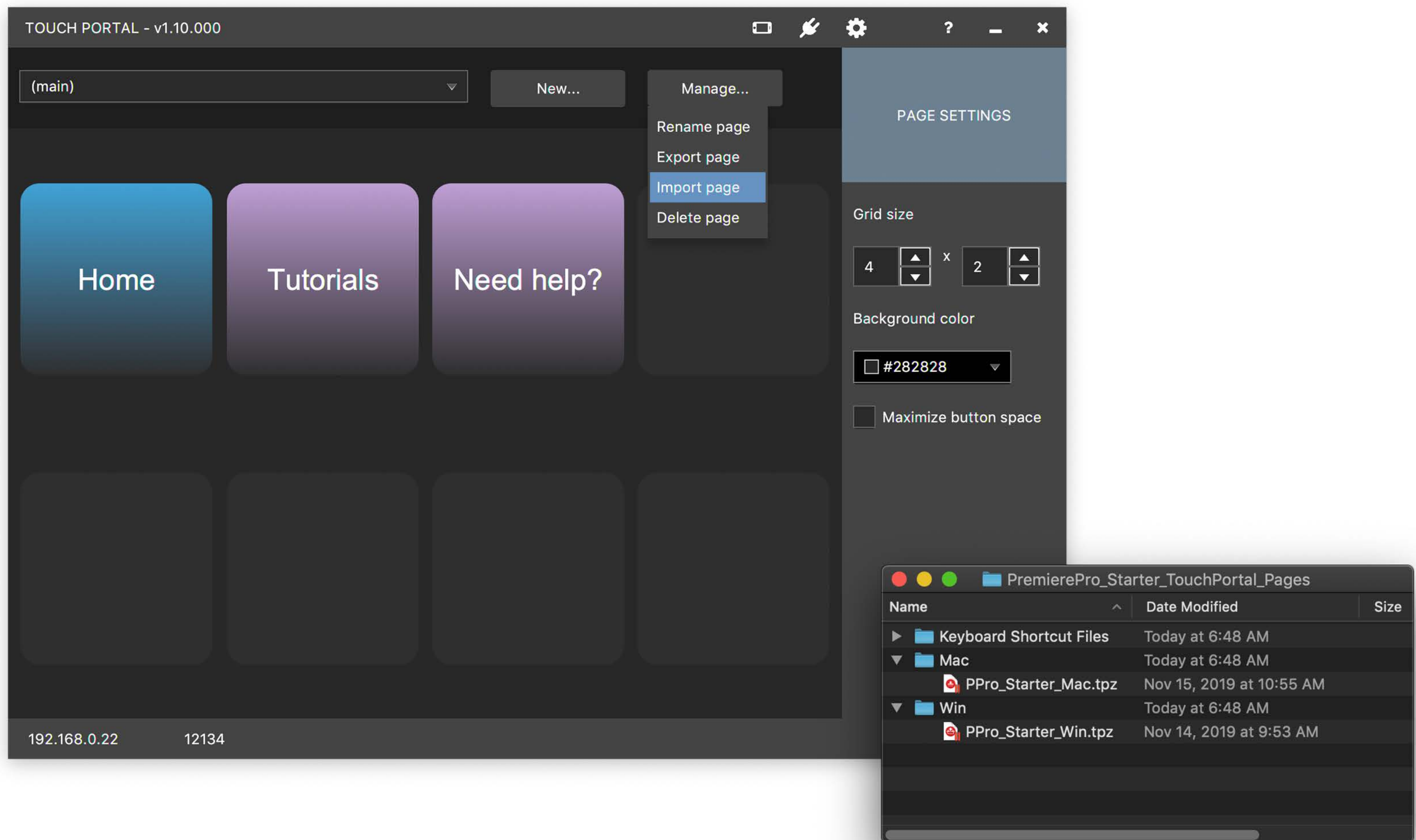
Open Premiere Pro and access the Keyboard Shortcuts menu. From the Keyboard Layout Preset dropdown menu, select “SideshowFX PPro”



Installing the Touch Portal Starter Page

If you haven't already, go to www.touchportal.com and download the desktop app. You will also need to download the Touch Portal app from the Play Store or App Store on your device.

Open Touch Portal on your desktop, select Manage/Import Page. Navigate to the Starter page and import the PPro_Starter_Mac.tpz or PPro_Starter_Win.tpz file.



Installing the Touch Portal Starter Page

You're all set! If you want to expand your icon library, visit SideshowFX by clicking the lower right button.

