

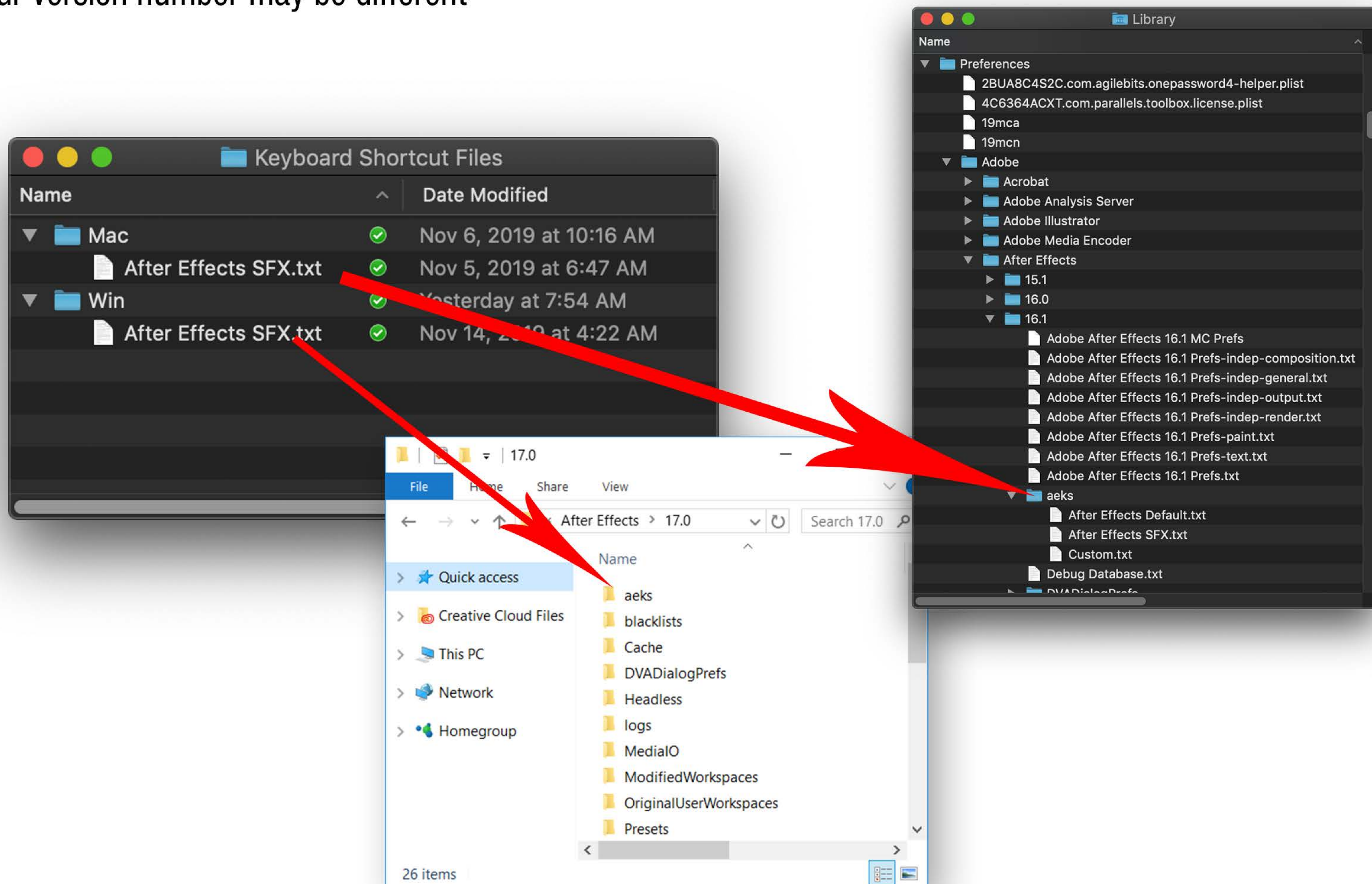
# Installing the Touch Portal Starter Page

First, in order for the key commands in this starter profile to work, you will need to install the supplied custom keyboard layout. Drag the file **After Effects SFX.txt** to the following folder.

Mac: `[username]_library_preferences_adobe_aftereffects_[vers]*_aeks`

Win: `users_[username]_AppData_Roaming_Adobe_After Effects_[vers]*_aeks`

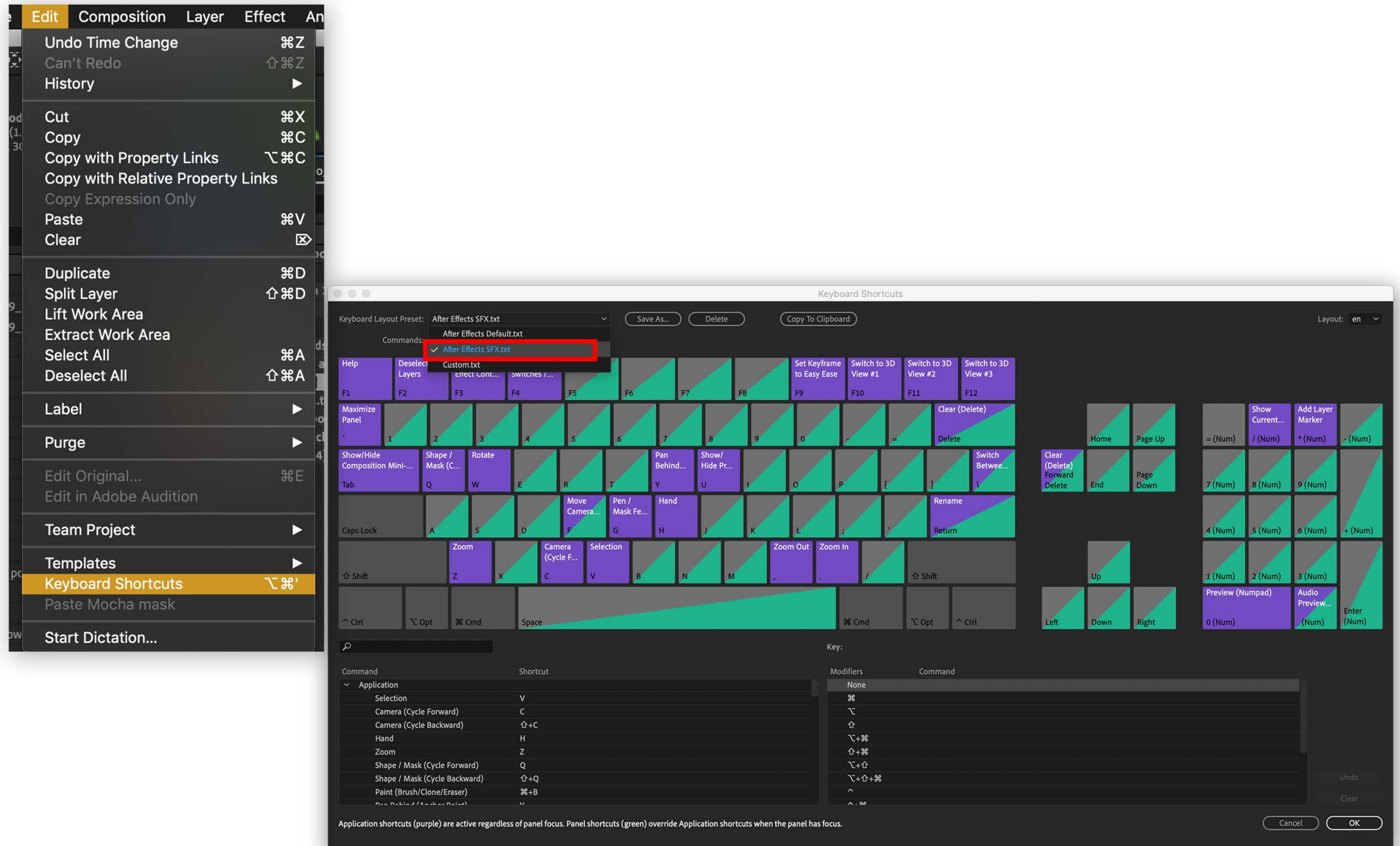
\*your version number may be different





# Installing the Touch Portal Starter Page

Open After Effects and access the Keyboard Shortcuts menu. From the Keyboard Layout Preset dropdown menu, select “After Effects SFX.txt”.

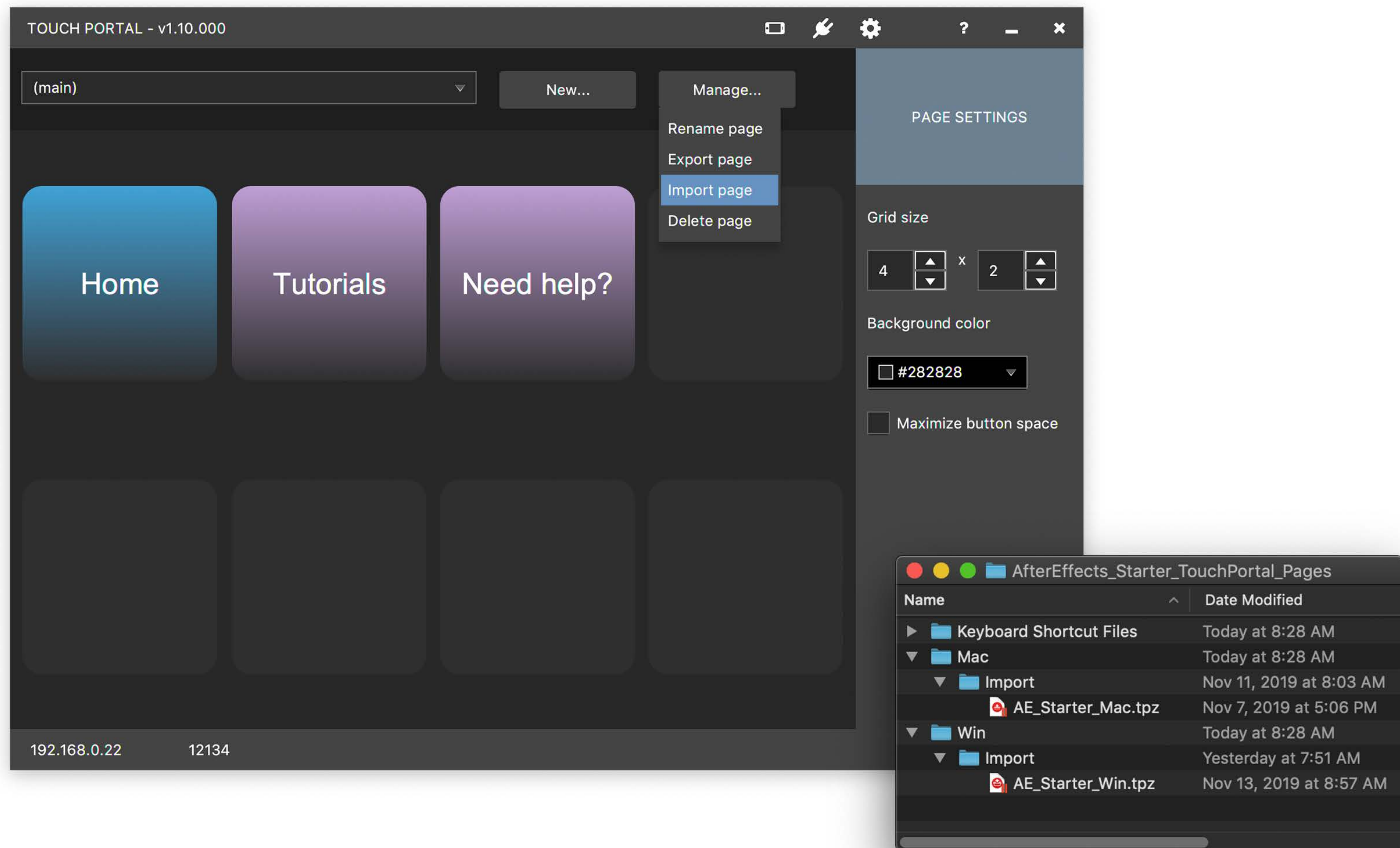




# Installing the Touch Portal Starter Page

If you haven't already, go to [www.touchportal.com](http://www.touchportal.com) and download the desktop app. You will also need to download the Touch Portal app from the Play Store or App Store on your device.

Open Touch Portal on your desktop, select Manage/Import Page. Navigate to the Starter page and import the AE\_Starter\_Mac.tpz or AE\_Starter\_Win.tpz file.





# Installing the Touch Portal Starter Page

You're all set! If you want to expand your icon library, visit SideshowFX by clicking the lower right button.

